

Guidelines to use the Graphical User Interface (GUI) for Marine Diseases: ABALONE models

This is a guideline for the GUIs that have been set up to easily manipulate the abalone model parameters and initial conditions and get results for different disease scenarios.

1 Files

To run the GUI for each model, you need to have two files (*.m and *.fig) located in the same folder. For instance, for the initial matlab model Abalone 1, you have the files Abalone1.m and Abalone2.fig in the folder GUI Abalone Model 1. The **Abalone1.m** file is the file you need to run on Matlab. The Abalone1.fig is the file you need to open in order to edit the outputs of the GUI (a priori you do not need to open and edit this file).

2 Run the GUI

On the Matlab workspace find and open the folder where you have located both files of the model you want to manipulate (e.g. Folder GUI Abalone Model 1 >> Files : Abalone1.m and Abalone1.fig). See detailed instructions, to open and use Matlab, in the link of the workshop web-page. <http://www.ccpo.odu.edu/RCNworkshop2015/matlabintro.html>.

Once you are in the folder, follow the steps 2-7 in Figures 1 and 2 (next page).

(1) Open Matlab

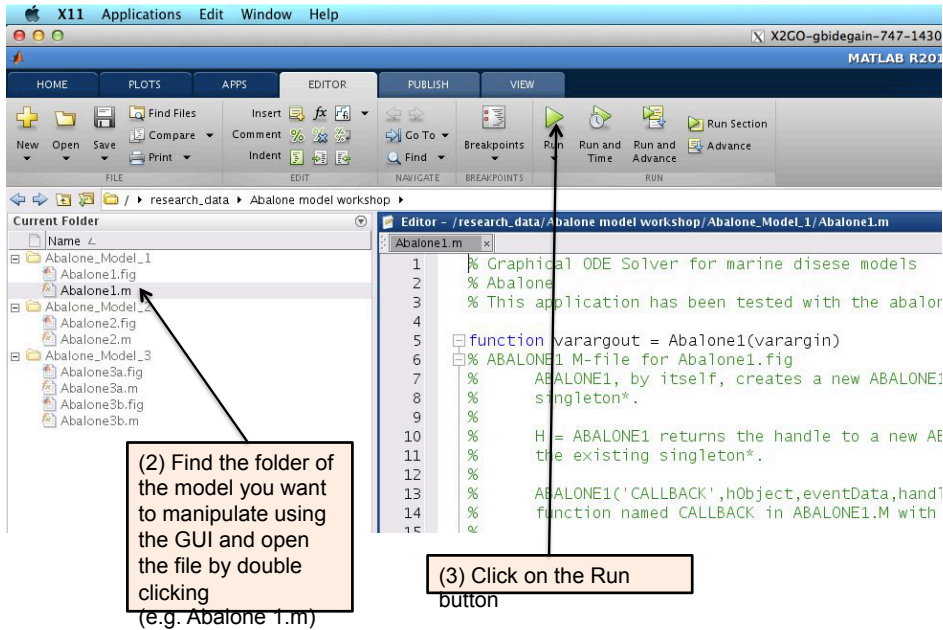


Figure 1: Steps to follow in the Matlab Workspace

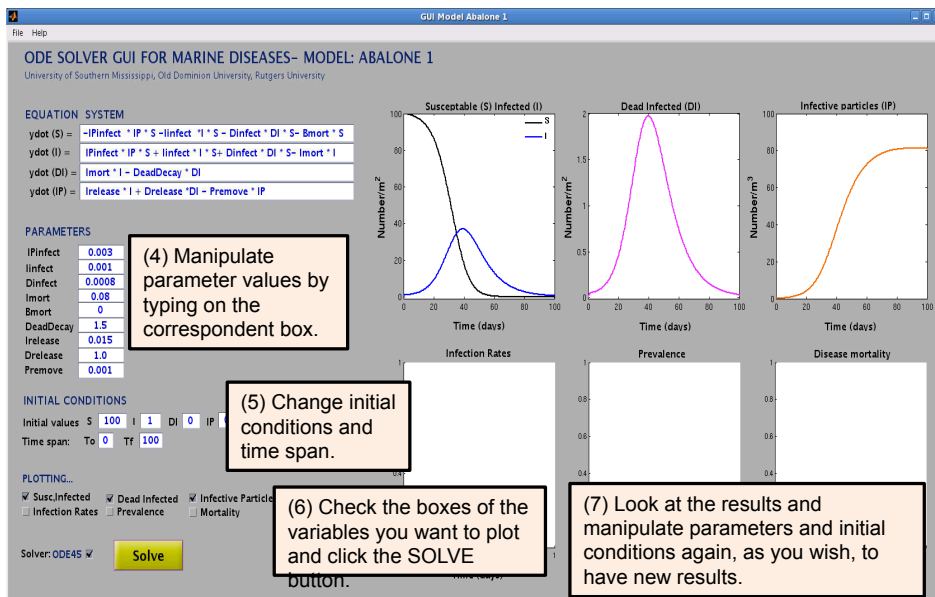


Figure 2: Steps to follow on the GUI window